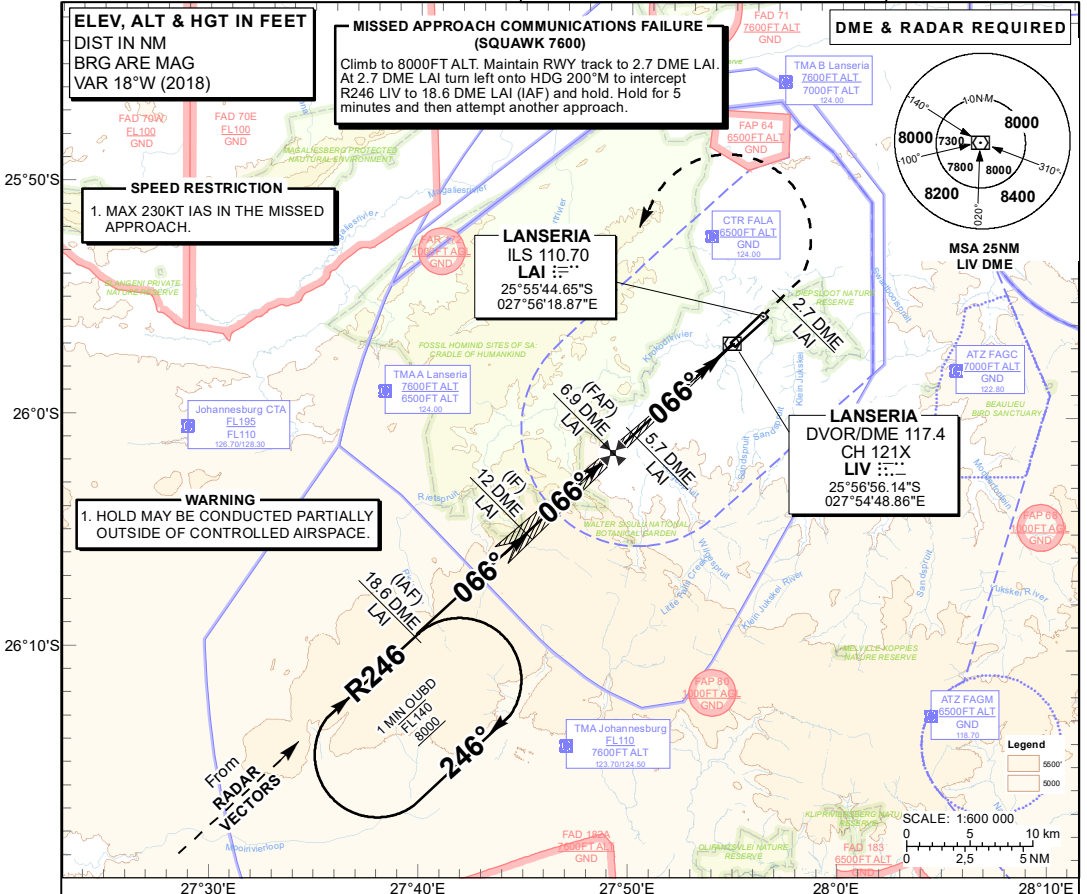


INSTRUMENT APPROACH CHART - ICAO **AERODROME ELEV 4521'**
HEIGHTS RELATED TO THR RWY 07 - ELEV 4521'

FALA APN: 122.85 JOHANNESBURG APP S: 124.50
 SMC: 121.65 E: 124.50
 TWR: 124.00 W: 123.70
 ATIS: 127.65 SMC: 121.90

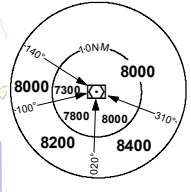
LANSERIA INTL
ILS Z RWY 07
CAT A - D



ELEV, ALT & HGT IN FEET
 DIST IN NM
 BRG ARE MAG
 VAR 18°W (2018)

MISSED APPROACH COMMUNICATIONS FAILURE - (SQUAWK 7600)
 Climb to 8000FT ALT. Maintain RWY track to 2.7 DME LAI. At 2.7 DME LAI turn left onto HDG 200°M to intercept R246 LIV to 18.6 DME LAI (IAF) and hold. Hold for 5 minutes and then attempt another approach.

DME & RADAR REQUIRED



SPEED RESTRICTION
 1. MAX 230KT IAS IN THE MISSED APPROACH.

WARNING
 1. HOLD MAY BE CONDUCTED PARTIALLY OUTSIDE OF CONTROLLED AIRSPACE.

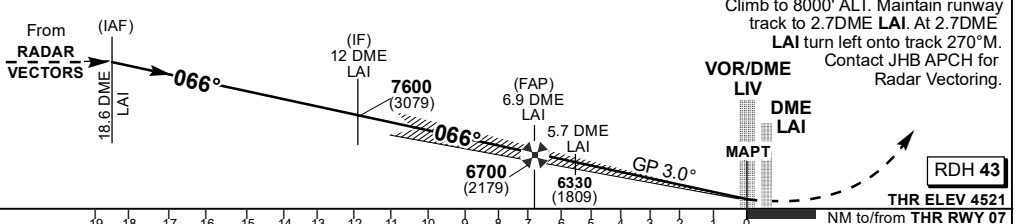
LANSERIA ILS 110.70 LAI
 25°55'44.65"S
 027°56'18.87"E

LANSERIA DVOR/DME 117.4 CH 121X LIV
 25°56'56.14"S
 027°54'48.86"E

LAI ILS/DME	6.9	6.0	5.7	5.0	4.0	3.0	2.0	1.0
ADVISORY ALT(HGT)	6700 (2179)	6430 (1909)	6330 (1809)	6120 (1599)	5810 (1289)	5500 (979)	5190 (669)	4880 (359)

TRANSITION LEVEL 8000
TRANSITION LEVEL ATC

INA ALT: via RADAR VECTORS



MISSED APPROACH:
 Climb to 8000' ALT. Maintain runway track to 2.7 DME LAI. At 2.7 DME LAI turn left onto track 270°M. Contact JHB APCH for Radar Vectors.

RDH 43
THR ELEV 4521

CHANGE: FIX Labels Revised

OCA/H		A	B	C	D	GS	KT	80	100	120	140	160
ILS/DME	With 2.5% Missed APCH Gradient	5450 (929)	5450 (929)	5450 (929)	5450 (929)	FAP to THR	M:S	5:10	4:08	3:27	2:57	2:35
	With 3.5% Missed APCH Gradient	5020 (499)	5020 (499)	5020 (499)	5020 (499)	Rate of descent	FPM	413	516	619	722	826
	With 4.2% Missed APCH Gradient	4721 (200)	4721 (200)	4730 (209)	4739 (218)	NOTE: 1. All circling approaches to land southeast of RWY 07/25 are entirely at the discretion of the pilot in command. 2. CAT D circling prohibited. 3. Advise ATC of an intention to divert in the event of a missed approach.						
Circling: AD ELEV		5320 (799)	5320 (799)	5930 (1409)	PROHIBITED							